

**Anti-Caspase-3 (p17 subunit) Antibody**  
**Catalog # AN1669****Specification**

---

**Anti-Caspase-3 (p17 subunit) Antibody - Product Information**

Application	WB
Primary Accession	<a href="#">P42574</a>
Reactivity	Bovine
Host	Mouse
Clonality	Mouse Monoclonal
Isotype	IgG1
Calculated MW	31608

**Anti-Caspase-3 (p17 subunit) Antibody - Additional Information**

Gene ID 836

**Other Names**

Yama, CPP32, apopain, CASP3

**Target/Specificity**

The caspases are a group of cysteine enzymes, which cleave proteins in response to intrinsic and extrinsic pathways that cause apoptotic cell death. The caspases can be grouped into two subgroups based on their roles in apoptosis. Initiator caspases (caspases 2, 8, 9, and 10) are activated through the apoptosis-signaling pathways and activate the effector caspases (caspases 3, 6, and 7) which carry out apoptosis. Caspase cascades are initiated through assembly of multiprotein complexes that trigger activation of the initiator caspases, which are then released and are able to activate the downstream effector caspases.

**Dilution**

WB~~1:1000

**Format**

Protein G Purified

**Storage**

Maintain refrigerated at 2-8°C for up to 6 months. For long term storage store at -20°C in small aliquots to prevent freeze-thaw cycles.

**Precautions**

Anti-Caspase-3 (p17 subunit) Antibody is for research use only and not for use in diagnostic or therapeutic procedures.

**Shipping**

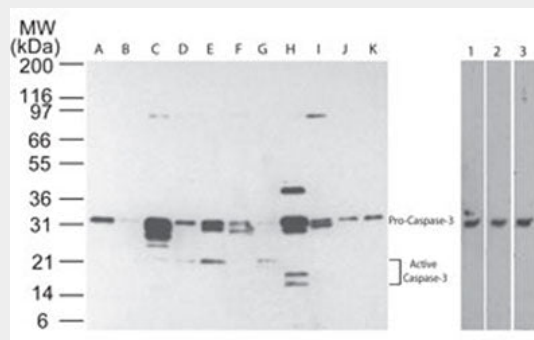
Blue Ice

**Anti-Caspase-3 (p17 subunit) Antibody - Protocols**

Provided below are standard protocols that you may find useful for product applications.

- [Western Blot](#)
- [Blocking Peptides](#)
- [Dot Blot](#)
- [Immunohistochemistry](#)
- [Immunofluorescence](#)
- [Immunoprecipitation](#)
- [Flow Cytometry](#)
- [Cell Culture](#)

### Anti-Caspase-3 (p17 subunit) Antibody - Images



Western blot analysis of Caspase-3 in multiple human tissues using CM4911 at 1:100. The tissues shown are A) brain, B) heart, C) intestine, D) kidney, E) liver, F) lung, G) muscle, H) stomach, I) spleen, J) ovary, and K) testis. Lanes 1, 2 and 3 demonstrate the species crossreactivity of the antibody in human, mouse and rat heart lysate, respectively.

### Anti-Caspase-3 (p17 subunit) Antibody - Background

The caspases are a group of cysteine enzymes, which cleave proteins in response to intrinsic and extrinsic pathways that cause apoptotic cell death. The caspases can be grouped into two subgroups based on their roles in apoptosis. Initiator caspases (caspases 2, 8, 9, and 10) are activated through the apoptosis-signaling pathways and activate the effector caspases (caspases 3, 6, and 7) which carry out apoptosis. Caspase cascades are initiated through assembly of multiprotein complexes that trigger activation of the initiator caspases, which are then released and are able to activate the downstream effector caspases.